

Rs.50 January, 2007

SOCIETY

A MAGNA PUBLICATION

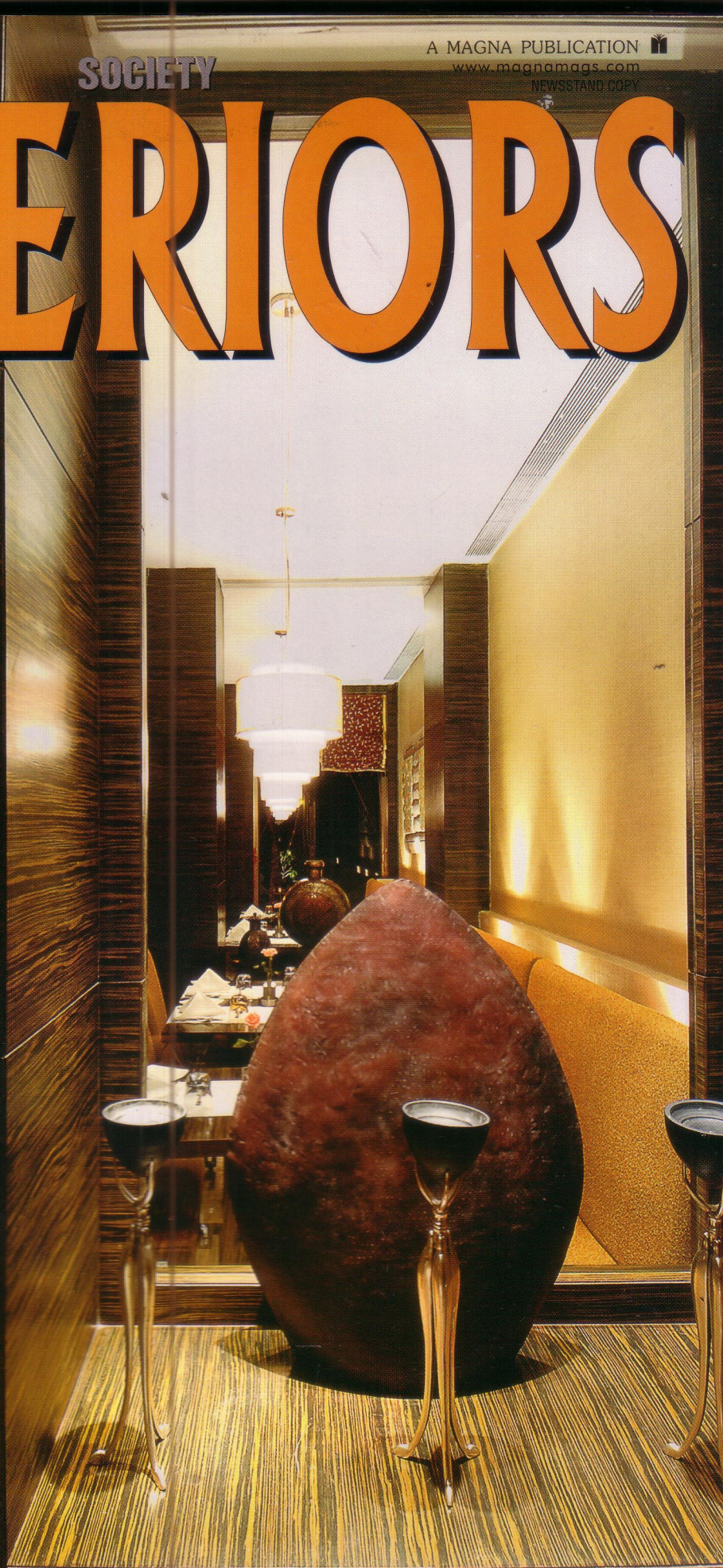
www.magnamags.com

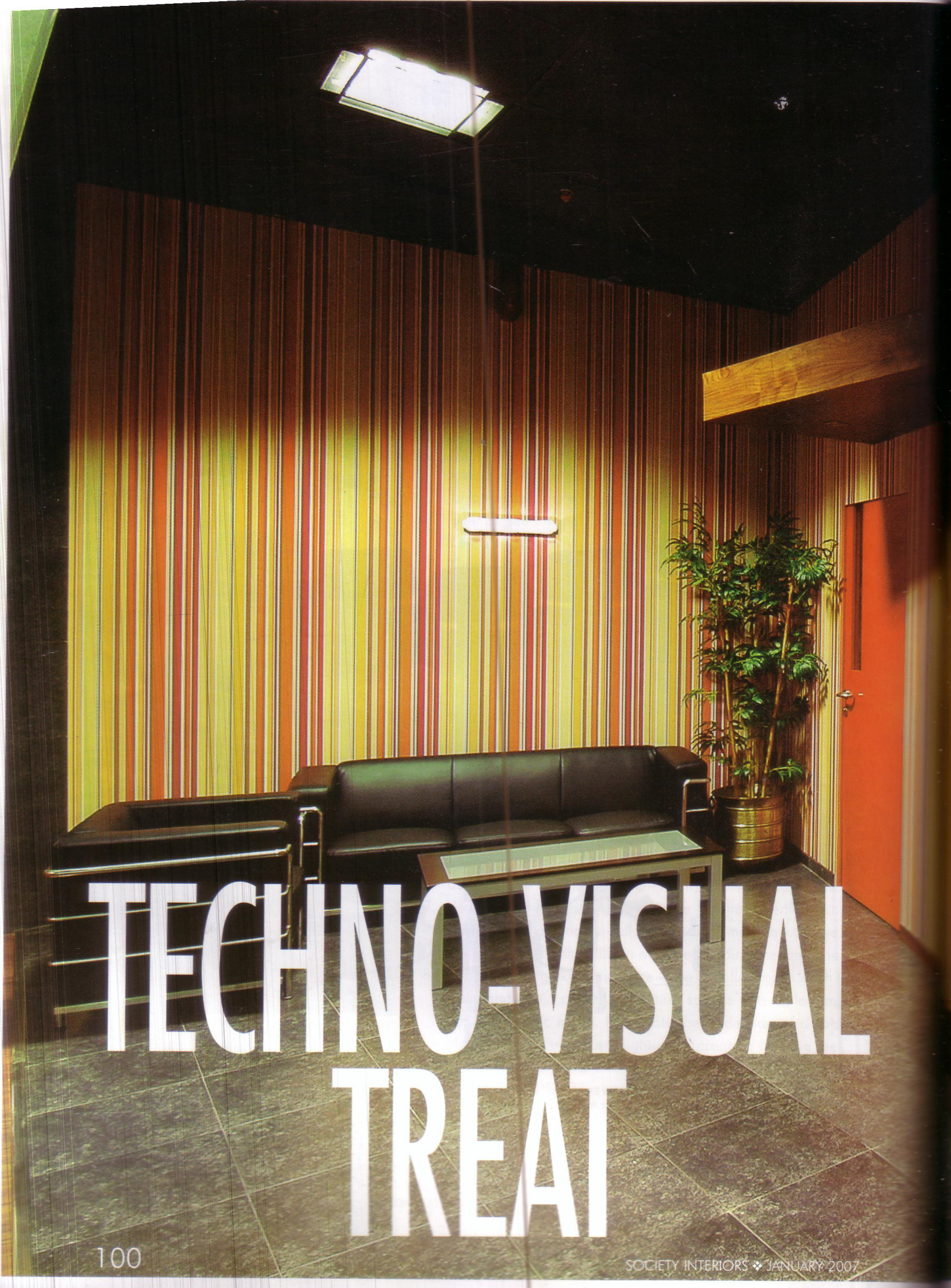
NEWSSTAND COPY

INTERIORS

Commendable works of Sen Kapadia, Nitin Killawala, Sudhir Diwan, Khozema Chittalwala, Bharat Shetty, Ninad Tipnis, Pranav Upasni, and sculptor Ankit Patel

Sneak Peak at the delightful spaces of Gauri Pradhan & Hiten Tejwani, and the Khorakiwalas

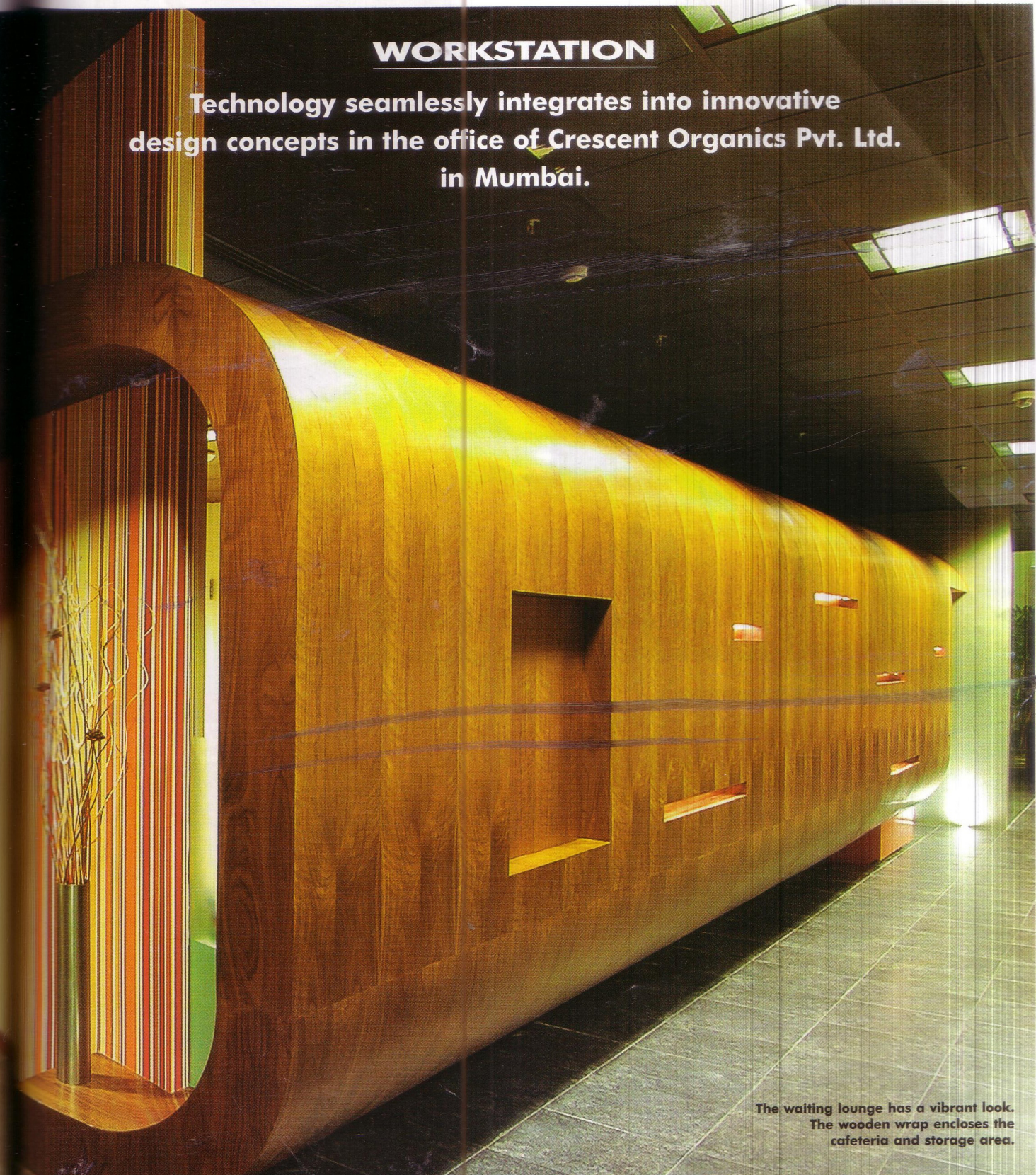




TECHNO-VISUAL TREAT

WORKSTATION

Technology seamlessly integrates into innovative design concepts in the office of Crescent Organics Pvt. Ltd. in Mumbai.

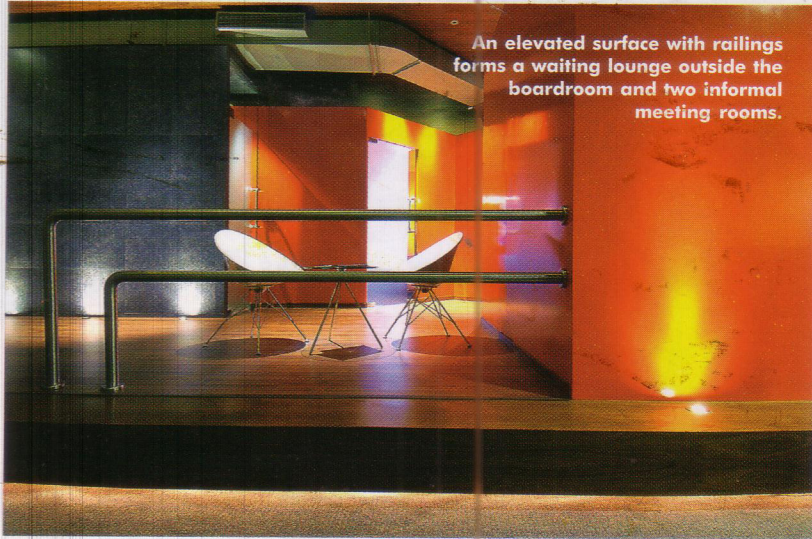


The waiting lounge has a vibrant look. The wooden wrap encloses the cafeteria and storage area.

❖ Bharat Shetty Architects and Interior Designers, maintains a hands-on approach in the pursuit of quality and design excellence. The firm provides services, which go beyond design consultancy. Its team of designers constantly seeks to expose themselves to new technologies, construction techniques and materials to achieve innovative and creative solutions ❖

Bharat Shetty Architects and Interior Designers, 421, Sai Commercial Building, BKS Devshi Marg, near Lakme Govandi, Mumbai 400088; Tel: 67978108, Fax: 25481107; Email: info@bharatshetty.com

Tall, attractive and modern ...well they might sound like the description of an attractive hunk; but here they describe the exteriors of a building! This is Windsor Tower one of the landmark buildings in Kalina, Mumbai, with its distinctive appearance — a glass and stone façade that mirrors the sky, making it hard to miss it even from a distance. And once inside, you can't miss the office of Crescent



An elevated surface with railings forms a waiting lounge outside the boardroom and two informal meeting rooms.



The overpowering bright hue is well balanced by white furniture creating a very relax and informal ambience.



Black sink in sofas, a gray stone-finished cuboid, and the glass panels create a pleasing picture in the reception area.



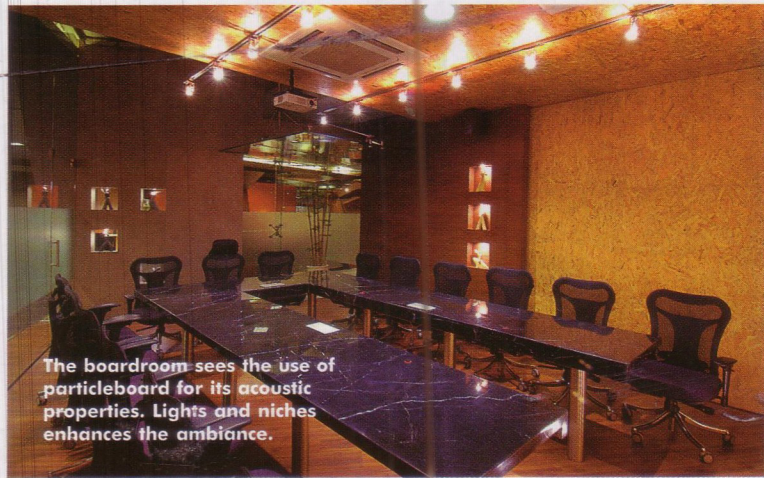
The senior MD's cabin with distinguished work areas.

Organics Pvt. Ltd. a chemical trading company, spread over the entire second floor that has been creatively designed keeping today's work culture in mind.

Breaking away from the old definition of 'workspace' (an office with cubicles) Bharat Shetty Architects and Interior Designers have literally taken a 360 degree turn in terms of design and taking full liberty in experimenting with various materials, textures and styles that has resulted in a very innovative look. "In today's

work culture people spend long hours in the office, therefore we have provided them with a good working environment, one that is comfortable, fosters creativity and growth," explains Bharat Shetty, the principal designer of the firm.

The bright textured wall, with a niche and an idol of Ganesha welcomes you inside to reveal a space that seals your first impression of this being an unusual office. This is the swank reception area, with black sink-in sofas that invites you to take a seat, while you take in the interesting geometric form — a grey stone-finished



The boardroom sees the use of particleboard for its acoustic properties. Lights and niches enhances the ambiance.



The meeting room with glass partitions creates a spacious look.



The junior MD's cabin sees a very thoughtful touch with use of unusual colours and concept.

cuboid that seems to be controlled by the glass panels in metal frames — that is the backdrop. On the other side a cluster of bucket chairs sit around a round glass table to create an informal meeting area. “The space symbolizes the company philosophy through the design elements — wood, the stone effect and contemporary design — conveying their history and a rock solid foundation, yet acceptance of modern work culture and technology of the future,” explains Padmini Pandey, creative director, who was also part of the design team.

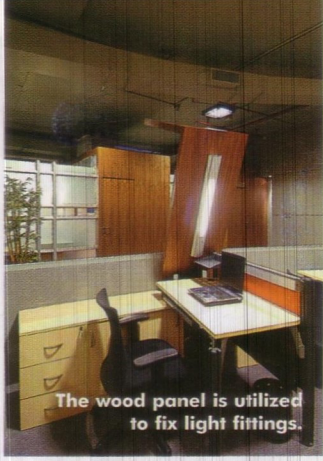
Inside the work area, an open brick wall forms an interesting design element throughout the office; fencing the directors’ cabins, the MD cabins, boardroom and the meeting room from the general staff area in the centre. Another interesting feature is the second skin formed by a slanting glass partition just behind the brick fencing to make space for the secretary’s desk.

One notices a rather unusual design element circling the staff area — wooden L-shaped (though inverted) panels that hold task lights just above each workstation. Keeping the logistic in mind, these working pockets are designed for flexible communication.

On the periphery are the well planned directors’ cabins. A lot of thought had to go into this since “they preferred two directors sharing one cabin.” To create



The retro look for informal meeting area has a very relaxed ambience.



The wood panel is utilized to fix light fittings.



a separate work space while retaining an interactive environment was a challenge. The worktables are pushed towards opposite ends and the walls are clad in fabric (for acoustics) giving it a different look from the rest of the office.

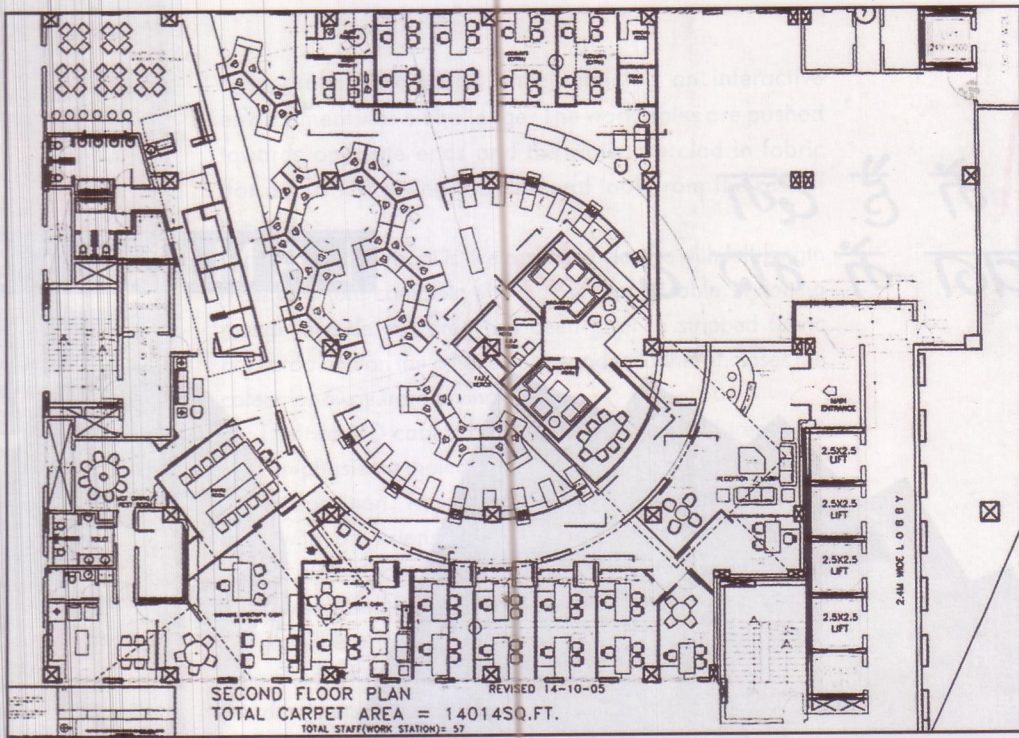
The meeting room is like a glass enclosure with full-length glass partitions complete with a glass-topped table. A waiting lounge outside this area has been given a stripped fabric backdrop and on the other side a wooden tunnel encloses the cafeteria, away from prying eyes.

The two MD cabins have been given special treatment with emphasis on their comfort without losing the essence of their position. The senior MD's cabin has a very sober look with an extensive use of wood complemented by yellow leather chairs. A little beyond is a meeting area visually segregated from the rest by a carpet and laminated ceiling. There is also an informal seating arrangement a little ahead. Keeping the erratic working schedules in mind, the designers have also provided a relaxing room for him with very soothing ambiance and low seating which could also double up as a bed for a catnap.

The other MD's cabin has a very young and cheerful look with grey walls, marble-topped tables and a faux leather cladding on one structural column. Here, one just can't miss the informal seating area that has a very retro

Note the neat segregation of work areas: the main work area is in the center, while the periphery has directors' cabins.





feel as opposed to the modern persona of the rest of the office space. "This elegant, serene area helps to stay calm when work gets hectic," explains Padmini.

The well-designed conference room has a glass partitions on three sides while one wall has particleboard cladding for acoustic purposes. This area is well equipped to facilitate dynamic, productive meetings. While the other two informal meeting rooms have orange as a dominating colour balanced by sleek white sofas. "A rather bold colour but being energetic it is not distracting, is comfortable yet functional, and beautifully lit," feels Bharat.

Though it is a work space, the architects have managed to offer different experience to both the users and visitors. Understanding the functional and behavioural patterns and putting in extra efforts definitely brings a sense of vitality to the space creating a lasting impression ❖

TEXT: SWATI G BALGI

PHOTOGRAPHS: PRASHANT BHAT; COURTESY THE ARCHITECTS

